

Installation of Diamond Channel



1. Excavate a trough along channel run



2. Insert a timber packer min. 6mm longer and wider than the overall size of the trough



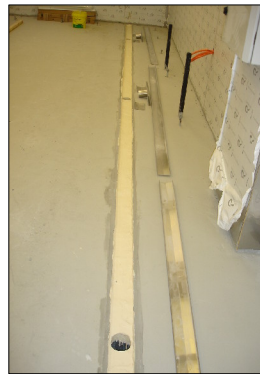
3. Fill in excess excavation with mortar



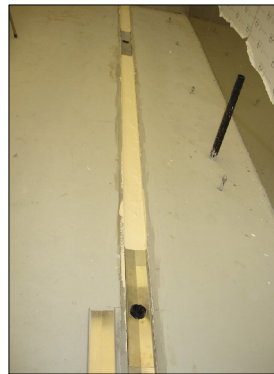
4. Remove the packing timber



5. Clean out excess mortar and ensure none has fallen into outlet pipes



6. Lay out all of the components along the channel to ensure all items are on site



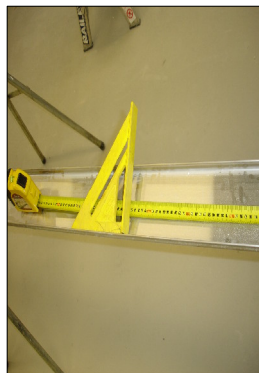
7. Insert the spigot outlet pieces into the discharge pipes



8. Mark the channel and the outlet to ensure they are in the correct location



9. Measure the length of channel required



10. Measure the length of channel required and mark a square cutting line on it



11. Using a metal cutting blade cut along the marked line, a metal drop saw can make it easier to keep the cut square



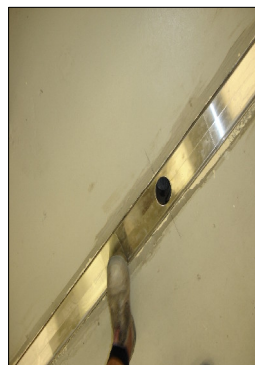
12/13. Remove any sharp edges or excess metal from the newly cut channel



14. Snap the cut channel into place



15. Measure the next channel length required and cut as per previous



16. Snap the next channel into place



17. Check the channel is straight and level

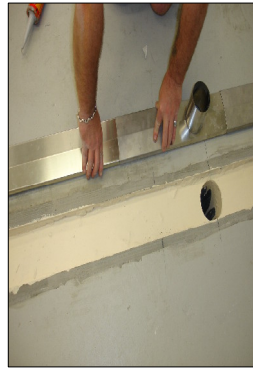
Installation of Diamond Channel



18. Remove the channel and lay upside down beside the trough



19. Apply Sikka flex or silicon to the surface of the channel and outlet beside the joint



20. Using the joiner snap it into place over the adhesive



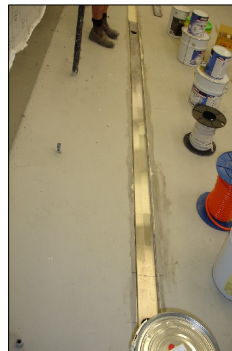
21. Glue the end cap onto the end of the channel



23. Repeat the application of flexible sealant at each joint and apply the joiner plate



24. Run a bead of adhesive (Sikka flex) along the run where the channel is to be permanently installed



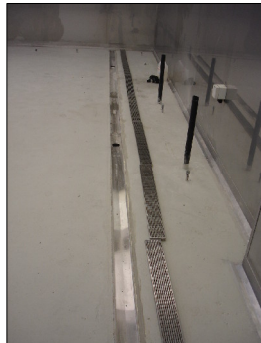
25. Roll the channel over and lower it into position checking it is straight and level



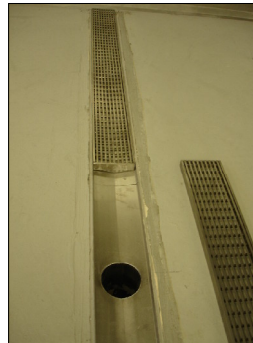
26. Use weighted objects with a flat base to place over the channel to ensure it does not move whilst the adhesive is curing



27. Seal the edge of the channel with a flexible waterproof sealant



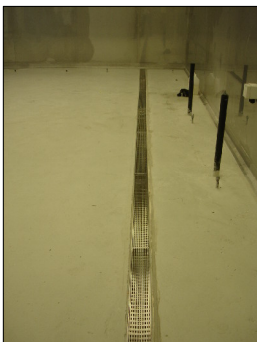
28. Lay out the grates along the channel run to ensure all pieces required are on site



29. Insert the grates starting at one end



30. Measure the last grate and cut to size if required using a metal drop saw or angle grinder, remove any sharp edges



31. Wipe down the grates with a cloth to remove any dirt or grime, installation is complete.

This document was created with Win2PDF available at <http://www.win2pdf.com>.
The unregistered version of Win2PDF is for evaluation or non-commercial use only.
This page will not be added after purchasing Win2PDF.