



WETT SOLUTIONS

STAINLESS STEEL SHOWER DRAINAGE
ARCHITECTURAL LINEAR DRAINAGE
DOOR TRACK DRAINAGE SYSTEMS
STAIRCASES . ORNATE SCREENS
CUSTOM FABRICATION



WETT SOLUTIONS

URBAN SERIES

Instant Architectural Drainage

The Urban Series Linear Shower Grate is a designer modular drainage system developed for easy specification and trouble-free fast installation. The standard size modular components simply fit together in lineal lengths to create a perfect architectural channel drain. The combination of four grate styles and the flexibility of singular or multiple outlet positions caters for all drainage applications.

URBAN SERIES | CHANNEL DRAINS



HEELGUARD

Modern, polished wedge wire linear look



TILE INSERT

Integrate bathroom tiles into the drain



SHADOWLINE

Flush mount tiles or stone for seamless integration



QUATTRO

Modern industrial style perforated polished grate

The Urban Series Channel Shower Grate is a designer modular drainage system developed for easy specification and trouble-free fast installation. The standard size modular components simply fit together in lineal lengths to create a perfect architectural channel drain. The flexibility of singular or multiple outlet positions can cater for all drainage applications. This intelligent channel drainage system comes complete as a component kit allowing the channel to be used at its full length or shortened to suit smaller applications. Two or more kits can be easily extended with the use of joiner plates.

Installation Kit Includes

- 1 x Channel Grate
- 1 x Trough (V Channel)
- 2 x End Caps
- 1 x Outlet and Outlet Plate (44 or 74mm)
- 1 x Set of Glue and Silicone
- 1 x Stainless steel cutting disc

A tungsten carbide cutter for 44mm or 74mm outlets can be purchased separately.

Product Specifications

- 1220mm, 1500mm, 2440mm & 3000mm channel lengths, able to be joined or cut to custom length
- Choose from 50, 75 and 100mm grate widths
- Choose between 44mm and 74mm outlets
- Crafted in 316 grade stainless steel
- Straight joiner and 90° corner plates to create longer lengths

Benefits of our Urban Series Channel Grate System

- No incorrect ordering issues: adjust the channel grate on site to suit the application
- Complete installation kit included as standard with grate
- Australian design and manufacture using premium 316 marine grade Stainless Steel with a 5 year warranty
- Choice of channel grate styles, outlet sizes and length
- No lead time with same-day dispatch of stock items.



URBAN SERIES | CHANNEL DRAINS

Modern design options, ease of installation and quality of manufacture are paramount to WETT Solutions. We manufacture our channel grates from Premium 316 Grade Stainless Steel for ultimate durability and offer a 5 Year Guarantee on all of our manufactured products.

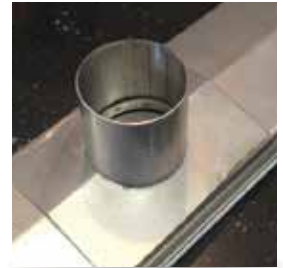
We produce the highest quality off-the-shelf stainless steel drainage systems in Australia. They have been developed to offer maximum flexibility in design without compromising ease of installation.

Installation

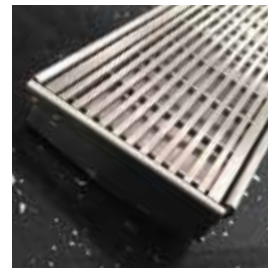
Once you have selected the desired design, measure the length of the channel run and outlet location (more than one can be installed if required). Cut the channel if needed and drill out the outlet hole. File the cut edges and glue the end caps and outlet plate into position with the supplied epoxy glue. Finally, measure and cut the grate to length. Now your channel drain is ready to install. For more detailed instructions, refer to our website.



V channel trough
fitted with end cap



Outlet in v channel trough

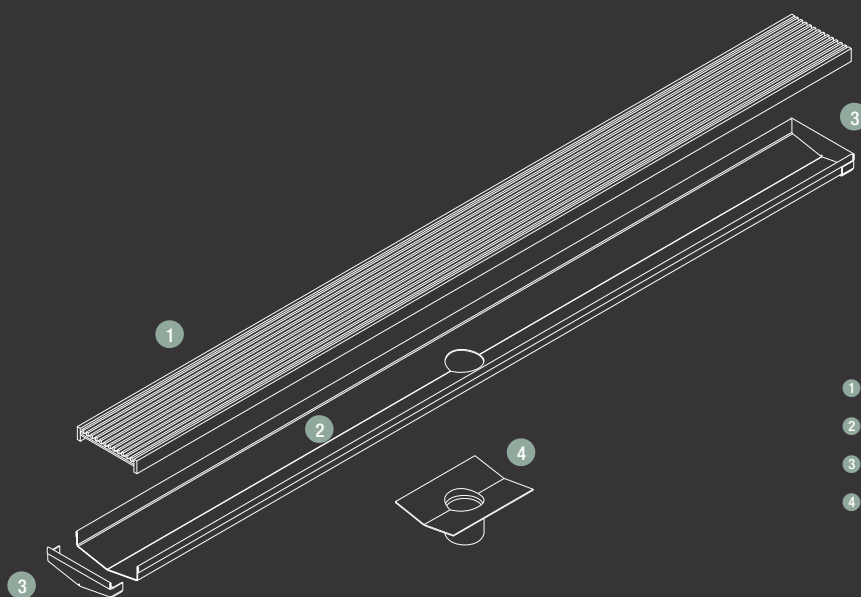
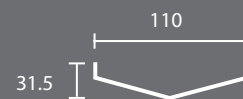
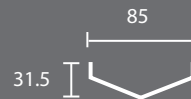
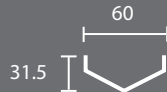


Heelguard grate fitted
to channel trough



Installed Heelguard
channel drain

Grate Sizes



- ① 316 Grade Stainless Steel Heelguard Grate
- ② Base Channel 1215mm long to suit all grate options
- ③ Stainless steel folded end caps (2 per kit)
- ④ Outlet plate 100mm long with spigot outlet sized in either 44mm or 74mm diameter

The highest quality complete stainless steel channel drain that is easy to install



ATS 5200, 040,2005
CERT 23100



EDGE TROUGH | CHANNEL DRAINS

Edge Trough is the only modular stainless steel channel drainage system which incorporates both a horizontal and vertical tile flange incorporated into the base channel trough. We manufacture our channel grates from Premium 316 Grade Stainless Steel for the ultimate durability and offer a 5 year Guarantee on all of our manufactured products.

Edge trough is a stock line modular system that eliminates any time delays on site as it can be modified on site to suit any changes to run length and outlet location. It is easily shortened or lengthened on site by the tiler, the kits come complete with all the items required to assemble them including a stainless steel cutting disc.

Installation

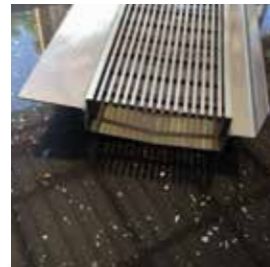
After choosing the width and style of grate, measure the length of the channel run and outlet location (more than one can be installed on longer channel if required). Simply cut the channel with the cutting disc provided taking into consideration the length and style of the end caps. Now, using a tungsten carbide hole saw to drill the outlet hole. Now file the sharp edges smooth. Glue the outlet and end caps into position using the fast set epoxy glue, then seal with the silicone. Finally measure and cut the grate to suit the finished assembled trough.



Edge trough with
tile flanges



Edge trough
with outlet

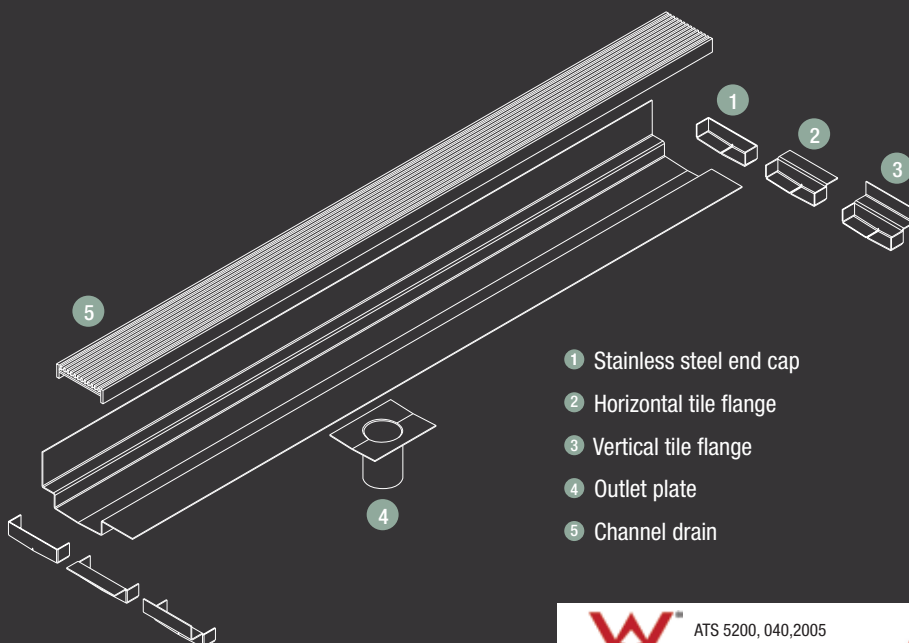


Heelguard grate fitted
in edge trough



Edge trough with horizontal
and vertical flange

Grate Sizes



Installation Kit Includes

- 316 Grade Stainless Steel Heelguard Grate
- Edge Trough Base Channel with tile flanges - 1215mm, 1500mm or 2440mm long to suit all grate options
- Stainless steel folded end caps (2 per kit)
- Stainless steel horizontal flange end cap
- Stainless steel vertical flange end cap
- Outlet plate 100mm long with spigot outlet sized in either 44mm or 74mm diameter

URBAN SERIES | CHANNEL DRAIN ASSEMBLY



1. Check all components

- 1 x Channel Base
- 1 x Spigot
- 1 x Grate
- 1 x Pack of Adhesive
- 2 x End Caps
- 1 x Tube of Silicone
- 1 x Outlet Plate



2. Measure and mark length of drain

- Trough . Length - 10mm
- Outlet . Length from end - 5mm
- Grate . Length - 12mm



3. Cut the drain to length

- Use safety glasses and ear plugs.
- Cut the trough and grate.
- Use an angle grinder and fine metal cutting disc.



4. Drill the outlet

- Place trough on a piece of timber.
- Use a metal hole saw to drill the outlet.



5. File sharp edges

- File cut edge of the trough, outlet and grate.
- Use sandpaper to finish them smooth.



6. Fit end caps

- Apply epoxy glue to both ends of the trough.
- Fit end caps to each end.
- Use an angle grinder and fine metal cutting disc.



7. Fit spigot outlet

- Mix epoxy glue, spread on plate and flange.
- Fix plate over hole and push spigot onto the flange



8. Fit grate

- Allow glue to dry for 15 minutes.
- Turn trough over and fit grate.
- Drain is now ready to install.

URBAN SERIES | CHANNEL DRAIN CUSTOM ORDERING

In addition to our standard range of Urban Series channel drains, we also offer a custom service if you would prefer to have the product made to order. If you are interested in placing a custom order, please fill in the form below, ensuring the following details are considered:

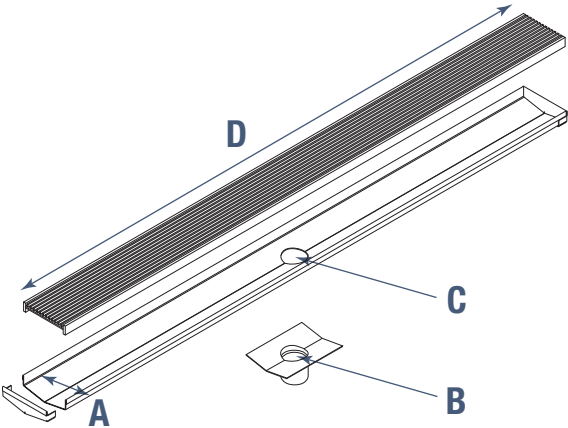
Product Specifications

- All dimensions are to be in millimeters
- Choose from 50mm, 75mm or 100mm grate widths
- For 50mm grate width, only a 44mm outlet diameter is available
- For 75mm and 100mm grate widths, choose between a 44mm or 76mm outlet
- Single grate can be no longer than 1500mm
- Single channel can be no longer than 3000mm

Select Grate Style

- ☐ Heelguard (Linear wedge wire look)
- ☐ Tile Insert (Tile integration)
- ☐ Quattro (Perforated polished look)
- ☐ Shadowline (Seamless tile integration)

A Width	B Outlet Diameter	C Position of Outlet	D Overall Length



Contact Name	Phone
Company	Fax
Address	
Post Code	Date
Email	Order No

URBAN SERIES | POINT DRAINS



HEELGUARD

Modern, polished wedge wire linear look



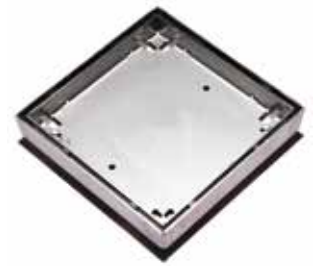
TILE INSERT

Integrate bathroom tiles into the drain



QUATTRO

Modern industrial style perforated polished grate



STONE INSERT

Integrate stone tiles into the drain

Designer stainless steel tile insert point drains have been developed to complement the linear channel drain system, or to be used instead of traditional floor wastes. The W.E.T.T. Spot Point Drain has the same intake capacity of a traditional 100mm floor waste. The tile insert is almost invisible and being only 22mm deep with 3 styles of grate make it the most versatile point drain to specify for easy trouble-free installation.

Product Specifications

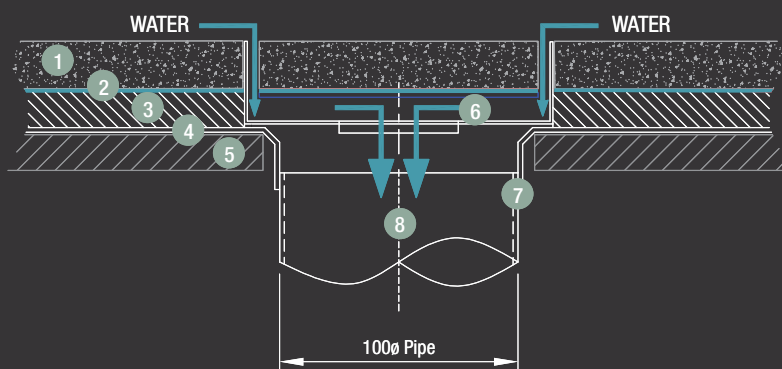
- 130mm square
- Choice of 43, 76 or 100mm outlet
- All 304 and 316 grade stainless steel
- Overall depth of 22mm and 33mm for stone insert

Suitable For

- Bathrooms and Showers
- Toilets
- Laundries
- Balconies
- Powder rooms
- Swimming pool surrounds



ATS 5200, 040,2005
CERT 23100

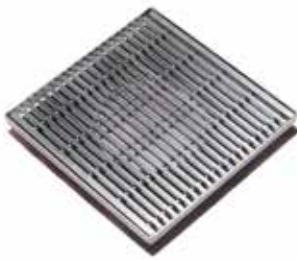


- | | |
|------------------------------|-----------------------|
| ① Stone or tile | ⑤ Floor board |
| ② Adhesive/tile glue | ⑥ Slim line WETT Spot |
| ③ Screed bed | ⑦ Leak control flange |
| ④ Waterproof membrane to BCA | ⑧ Waste pipe |

The highest quality complete stainless steel tile insert point drain



URBAN SERIES | SHADOWLINE POINT DRAINS



HEELGUARD

Modern, polished wedge wire
linear look - 13mm deep



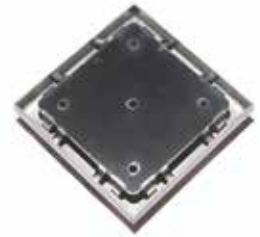
SHADOWLINE 130

Flush mounted tiles or stone
for seamless integration



SHADOWLINE 360

Circular flush mounted tiles or
stone for seamless integration



SHADOWLINE 100

Small 100mm square flush mounted
tiles or stone for seamless integration

Shadowline are superior designer stainless steel point drains that have been developed to be the ultimate in discrete architectural drainage. The Shadowline is completely invisible, yet still has the same intake capacity of a traditional 100mm floor waste. Any thickness of tile can be used from glass mosaics, ceramic tiles and natural stone and pavers, eliminating the need to reduce the thickness of the tiles, making them faster and more cost effective to install.

Product Specifications

- 130mm and 100mm square
- Choice of outlet diameter - 44mm or 74mm
- All 304 and 316 grade stainless steel
- Overall depth of 13mm
- No tile thickness reduction required
- Faster to install
- More cost effective when installing thicker tiles

Suitable For

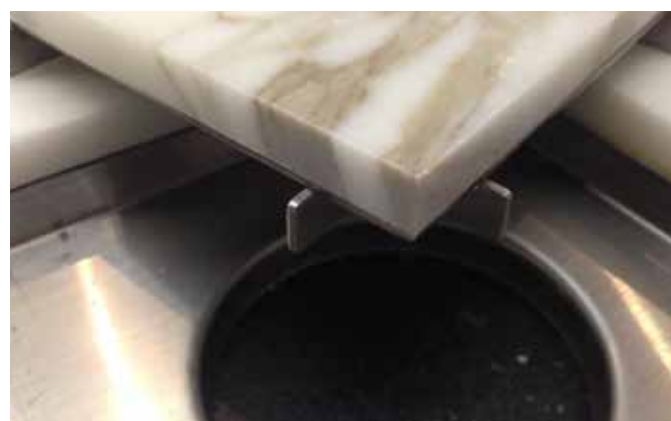
- Bathrooms
- Showers
- Swimming pool surrounds
- Powder rooms
- Rooftops
- Toilets
- Laundries
- Balconies



ATS 5200, 040,2005
CERT 23100



REVIT



The image is a composite of two photographs. The top photograph shows a wide view of a modern outdoor pool area. A rectangular swimming pool with clear blue water is the central feature. The pool is surrounded by a light-colored, textured stone or concrete deck. In the background, there is a dark, possibly black, wall or fence. To the left of the pool, there are several lounge chairs with grey cushions and a small table. To the right, there is a black storage box or equipment. The bottom photograph is a close-up view of a linear drainage system installed in a pool deck. The drainage is a long, narrow, rectangular channel with a metal grate, set into a light-colored stone or concrete surface. The channel is surrounded by green plants and a dark, possibly black, wall or fence.

WETTSOLUTIONS

ARCHITECTURAL SOLUTIONS

Our urban series heelguard and tile insert drain designs are featured in our range of residential and commercial architectural drainage solutions for indoor, outdoor and pool areas. Our architectural range includes our threshold- free doortrack drainage system, suitable for all sliding door systems creating a seamless transition from inside to outside.

WETT SOLUTIONS

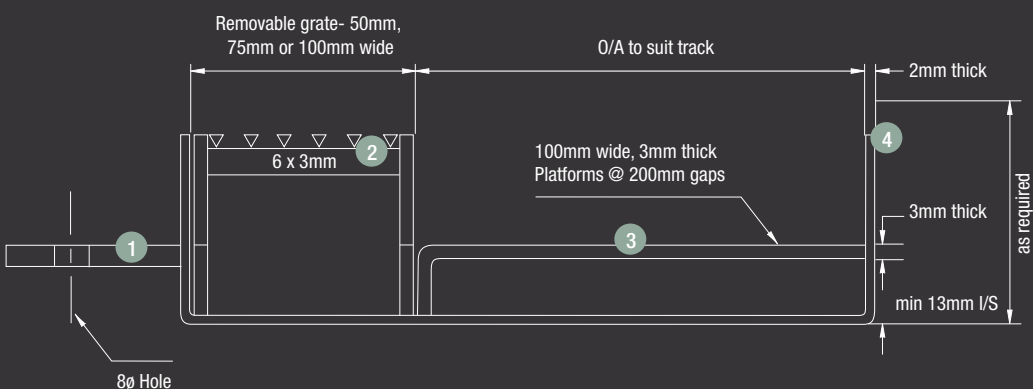
ARCHITECTURAL SOLUTIONS

DOORTRACK SYSTEM

Our Doortrack System stainless steel sliding door channel and grate solves all of the issues with regards to threshold drainage for both domestic and commercial construction. No longer is it an issue to have both inside and outside at the same finished level, the Doortrack system creates the sensation of enhanced space and eliminates trip hazards.

The bottom rail of any sliding door brand can be totally encapsulated by the stainless steel trough- ensuring there is no seepage of water under or around the sill for the length of the door. All moisture runs into the trough and any additional run off enters through the grate. This system accommodates from a single door up to any number of multi-stacking door systems.

Design and finish are paramount which is why there is a choice of heelguard linear look or a discrete tile insert. The channel can also be fitted with tile flanges for extra waterproofing options, as well as additional spigot outlets- depending on the amount of liquid needing to be drained.



- 1 Sub floor anchoring flange
- 2 Removable grate- 50mm, 75mm or 100mm wide
- 3 Door track mounting platform
- 4 Door track sub sill channel

WETTSOLUTIONS

ARCHITECTURAL SOLUTIONS

SWIMMING POOL SKIMMER BOX COVERS

The Urban Series 316 grade stainless steel channel and grate are used from swimming pool drainage in a variety of different style applications. WETT Solutions have the ultimate product to finish off your pool landscaping - our pool skimmer box cover.

You can now choose our stylish and modern alternative to the traditional round plastic pool skimmer box lid.

The WSPC35 is a 316 grade stainless steel two-part frame and cover which allows you to have the same tile or paver finish as the surrounding surface. The inner tile tray is fully removable, giving you complete access to the filter screen bucket within the skimmer box.

Choose from a dedicated lifting eyelet on each side on the top surface or a totally invisible edge with a lifting key that simply fits down between the gap in the inner and outer trays.





WETT SOLUTIONS

ARCHITECTURAL SOLUTIONS

COMMERCIAL DRAINAGE

WETT Solutions specialise in architectural stainless steel. Our standard range and custom made channel drains are perfect for all wet area applications, including commercial surface areas like car parks, swimming pools, public areas, commercial buildings, shopping centres and airports.



WETT SOLUTIONS

ARCHITECTURAL SOLUTIONS

RESIDENTIAL DRAINAGE

The Urban Series heelguard and tile insert channel drains and point drains can be used in outdoor and aquatic environments for architectural drainage. We offer off-the-shelf and custom products for all wet area residential applications, including balconies, pools, landscaping, roofing and driveways.

We recommend all pool grates be electropolished to help prevent discolouration if cleaned frequently.





WETT SOLUTIONS

ORNATE SCREENS

Our custom designed ornate screens transform a standard living area into an architectural feature. Our expertise in custom design and fabrication along with industry experience in architectural solutions allows us to craft the most complex designs without compromising on quality or ease of installation.



WETT SOLUTIONS KITCHEN SERIES

WETT Solutions Kitchen Series offers a range of integrated solutions for new and pre-existing kitchens. Our intelligent bench mounted drains eliminate pooling water and stained rings on benchtops from wet glasses, while our bench mounted knife slot and herb pots also remove clutter from the kitchen for a sleek, contemporary look and maximum workspace. Both our commercial and domestic bench tops and splash backs can be manufactured from sheet or solid stainless steel plate.



BENCH DRAINS

Integrated benchtop drains

Standard Sizes

100 (W) x 450mm (L)
100 (W) x 900mm (L)
100 (W) x 1000mm (L)
200 (W) x 450mm (L)
450 (W) x 450mm (L)

Custom drains available.



HERB POTS

Integrated benchtop herb pots

Standard Size

450 (L) x 160mm (W) with
6 interchangeable pots

Custom sizes available.



KNIFE SLOTS

Integrated benchtop knife slots

Standard Size

300mm (L) x 45mm (W)
450mm (L) x 45mm (W)



STAINLESS BENCHES

Indoor or outdoor polished
stainless steel benchtops

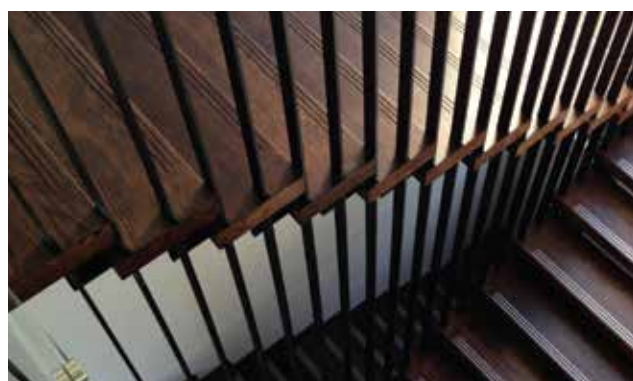
- Splash backs
- Domestic and commercial applications

WETT SOLUTIONS CUSTOM STAIRCASES

We have a great deal of experience in custom design and manufacture of indoor and outdoor staircases. We handle both residential and commercial projects and manufacture stunning architectural staircases in stainless steel, timber, glass and metals. No project is too difficult. We custom build solutions for outdoor areas including pedestrian foot bridges, cliff edges, boardwalks, landing areas and spiral staircases.

We ensure that outdoor staircases and walkways are not only durable and safe, but avoid obstructing views and encourage natural air flow for harmonious integration.

Custom staircases are not available in WA.





WETT SOLUTIONS

CUSTOM FABRICATION

In addition to our standard range of architectural drainage solutions, we offer a complete design and fabrication service for a wide range of applications, including but not limited to:

Balconies and Balustrades

Choice of metal, timber or a combination of materials.

Water Features

Indoor and outdoor features for commercial or residential areas.

Furniture

Modular couches, tables, vanities, cabinets and custom designs.

Outdoor Showers and Drainpipes

Complete solutions for pool areas including showers and drainage.

Fireplaces

Indoor or outdoor fireplaces and fire pits.



*"We can design and manufacture anything
for either residential or commercial areas.
Design is only limited by your imagination"*



WETT SOLUTIONS

CUSTOM SHOP FITTING

A large sector of our custom manufacturing service is for custom built shop fitting. We can custom design and fabricate fixtures for commercial shops including cafes, retail stores, grocery stores and supermarkets.

Benches and cabinets

High quality modern and industrial style cabinetry and benches made from stainless steel, timber or a combination of both. Design is only limited by your imagination.

Shelving and racking

Visual merchandising displays, floating shelves and racking solutions for supermarkets and bottle shops.

Bars with integrated drainage

Complete solutions for bar service wet areas.

Laser cut logo signage

Custom stainless steel logo signage for indoors or outdoors.

Furniture

Modular couches, seating solutions for corners and oddly shaped areas, custom modern and industrial style tables, benches and furniture.



WETT SOLUTIONS

Designer Showroom

88B Lilyfield Road,
Rozelle NSW 2039

Phone . 02 9810 1217

Fax . 02 9810 6795

sales@wettsolutions.com.au

www.wettsolutions.com.au

Phone Contacts

National .	WETT Solutions	02) 9810 1217
NSW .	WETT Solutions	02) 9810 1217
ACT .	WETT Solutions	02) 9810 1217
VIC .	WETT Solutions	02) 9810 1217
QLD .	Luxe by Design	07) 3265 7133
SA .	RD Agencies	08) 8387 7344
WA .	Civil & General Distributors	08) 9249 4733

United States	Dynakor Global	(760) 607 2038
----------------------	----------------	----------------